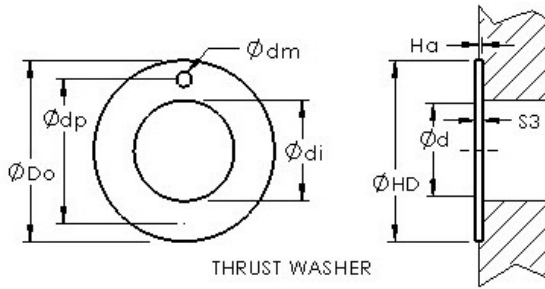




Lamar parts manufacturing company



AST ASTEPBW 1630-015 plain bearings

Bearing No. ASTEPBW 1630-015

Bore Diameter	14 mm
Outer Diameter	30 mm
Bearing Type	thrust washer
Shaft Dia., Nominal (d)	14.0000
Bearing Outside Diameter, Nominal (Do)	30.000
Washer Inside Diameter, Nominal (di)	16
Washer Inside Diameter Tolerance (di tol.) - +0.25 / -0.0	+0.25 / 0.0
Washer Outside Diameter, Nominal (Do)	30
Washer Outside Diameter Tolerance (Do tol.) - +0.0 / -0.25	+0.0 / 0.25
Washer Thickness, Nominal (S3)	2
Washer Thickness Tolerance (S3 tol.) - +0.0 / -0.05	+0.0 / 0.05
Mounting Hole Dia. (dm)	2.000
Mounting Hole Pitch Dia. (dp)	23
Housing Counterbore Depth (Ha)	1.00
Housing Counterbore Depth Tolerance (Ha tol.) - +0.2 / -0.2	+0.2 / 0.2
Housing Counterbore Diameter, Nominal (HD)	30.000

ASTEPBW 1630-015 Bearing 2D drawings and 3D CAD models



Lamar parts manufacturing company

Housing Counterbore Diameter Tolerance (HD tol.) - +0.12 / -0.0	+0.12 / 0.0
Material	Molded plastic with self lubricating resins.