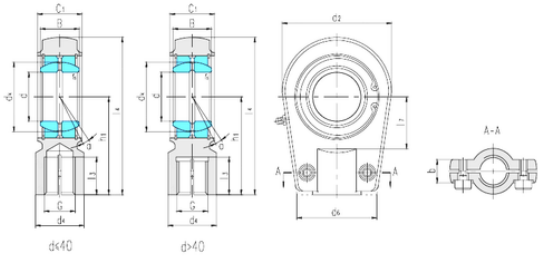




# Lamar parts manufacturing company



## LS SIR60ES plain bearings

Bearing No. SIR60ES

|                               |           |
|-------------------------------|-----------|
| Bore Diameter                 | 60 mm     |
| d                             | 60 mm     |
| B                             | 44 mm     |
| b                             | 46 mm     |
| d2                            | 130 mm    |
| d4                            | 75 mm     |
| d6                            | 120 mm    |
| dk                            | 80 mm     |
| h1                            | 130 mm    |
| l3 min.                       | 59 mm     |
| l4 max.                       | 200 mm    |
| l7 min.                       | 65 mm     |
| r min.                        | 1 mm      |
| C1                            | 50 mm     |
| Thread (G)                    | M58 × 1,5 |
| Bolt (G)                      | M16 × 45  |
| Angle                         | 6 °       |
| Weight                        | 6,49 Kg   |
| Basic dynamic load rating (C) | 245 kN    |

SIR60ES Bearing 2D drawings and 3D CAD models