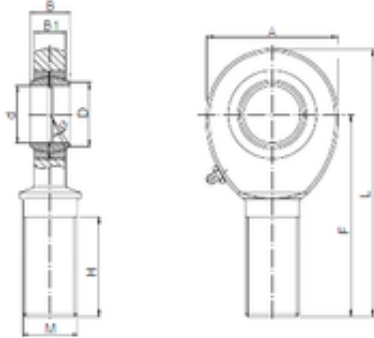




Lamar parts manufacturing company

25 mm x 29,6 mm x 31 mm ISO SAL 25 plain bearings



Bearing No. SAL 25

Bore Diameter	25 mm
d	25 mm
B	31 mm
A	60 mm
B1	22 mm
D	29,6 mm
F	94 mm
H	58 mm
L	124 mm
Bolt (G)	M24x2

SAL 25 Bearing 2D drawings and 3D CAD models