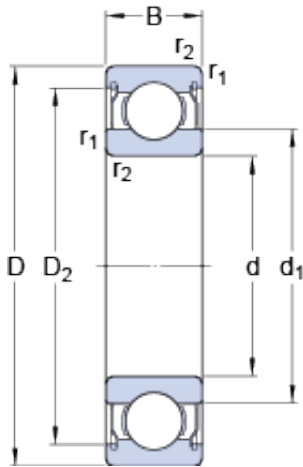




## Lamar parts manufacturing company



19.05 mm x 25.4 mm x 3.967 mm SKF D/W  
ER1634-2ZS deep groove ball bearings

Bearing No. D/W ER1634-2ZS

D/W ER1634-2ZS Bearing 2D drawings and 3D CAD models

Size	25.4x19.05x3.967 mm
Bore Diameter	25,4 mm
Outer Diameter	19,05 mm
Width	3,967 mm
d	19.05 mm
D	25.4 mm
B	3.967 mm
d <sub>1</sub>	21.35 mm
D <sub>2</sub>	24 mm
r <sub>1,2</sub> - min.	0.25 mm
d <sub>a</sub> - min.	21 mm
D <sub>a</sub> - max.	24.5 mm
r <sub>a</sub> - max.	0.25 mm
Basic dynamic load rating - C	0.572 kN
Basic static load rating - C <sub>0</sub>	0.365 kN
Fatigue load limit - P <sub>u</sub>	0.016 kN
Reference speed	53000 r/min
Limiting speed	26000 r/min
Calculation factor - k <sub>r</sub>	0.015
Calculation factor - f <sub>0</sub>	8.6
d <sub>1</sub>	21.35 mm
D <sub>2</sub>	24 mm
r <sub>1,2</sub> min.	0.25 mm
d <sub>a</sub> min.	21 mm



## Lamar parts manufacturing company

$d_a$ max.	21 mm
$D_a$ max.	24.5 mm
$r_a$ max.	0.25 mm
Basic dynamic load rating C	0.572 kN
Basic static load rating $C_0$	0.365 kN
Fatigue load limit $P_u$	0.016 kN
Calculation factor $k_r$	0.015
Calculation factor $f_0$	8.6
Mass bearing	0.0046 kg